

PASSES AND PERMITS

A Colorado State Parks Pass is required on all motor vehicles entering the park. All passes are to be displayed on the lower right inside of the windshield. An ANNUAL PASS is valid at any Colorado State Park. The ASPEN LEAF annual pass is available to Colorado seniors at a discounted rate. Daily passes are available at the park entrance stations, self-service dispensers, all State Park offices, and the Rocky Mountain Region office.

Colorado disabled veterans displaying the Colorado Disabled Veteran (DV) license plates are admitted free without a pass. However, a camping fee is charged.

All campers are required to purchase a valid camping permit.

For new and current information on all Colorado State Parks visit us online at www.parks.state.co.us.

James M. Robb - Colorado River State Park

P O Box 700
Clifton, CO 81520
(970) 434-3388
E-mail: colorado.river.park@state.co.us



Printed with soy inks on recycled paper.
30% POST CONSUMER WASTE

Any person who is excluded from participation in, denied the benefits of, or otherwise subjected to discrimination under any program of the Colorado Division of Parks and Outdoor Recreation on the grounds of race, creed, color, sex, age, handicap, or national origin, should contact the park manager, the nearest local regional office, the Division headquarters in Denver, Colorado - telephone (303) 866-3437 - or the National Park Service, P.O. Box 37127, Washington, D.C. 20013-7127.

Cualquier persona que sea excluida, negado los beneficios, o discriminado en cualquier programa del Colorado Division of Parks and Outdoor Recreation por su color, raza, credo, sexo, edad, desventaja o nacionalidad debe avisar a la oficina mas cercana de esta organizacion o por telefono a numero (303) 866-3437 o National Park Service, P.O. Box 37127, Washington, D.C., 20013-7127.

CSP-CORV-12.3M-5/08



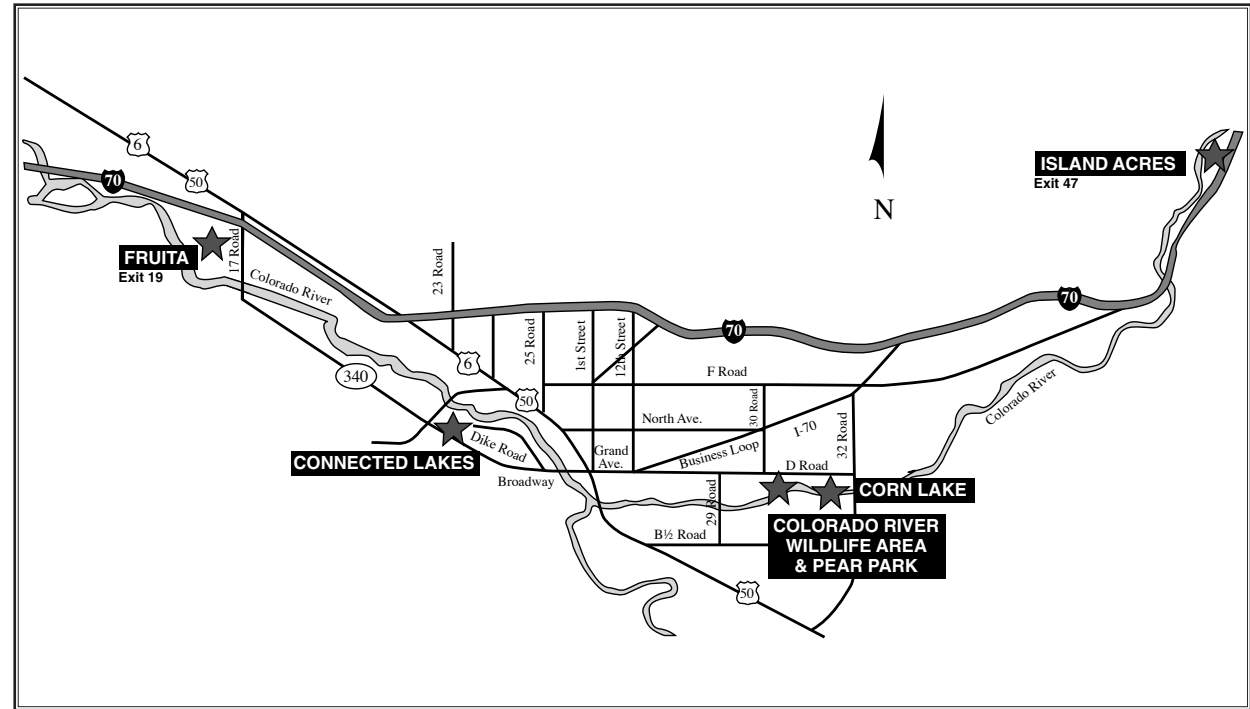
JAMES M. ROBB - COLORADO RIVER



Photo By Dick Fletcher



Visit all your Colorado State Parks at www.parks.state.co.us



James M. Robb - Colorado River State Park offers outdoor enthusiasts wonderful access to the Colorado River corridor. Whether you visit the park to rest or play, its diverse wildlife and recreational opportunities will entertain you.

The park links together various trails along the river corridor from Island Acres on the east side to the Fruita section to the Loma boat launch to the west. Along this trail system there

are a number of small park picnic sites and fishing areas managed by Colorado State Parks.

The Island Acres section is at the eastern end of the



park. The cool lakes and turf grass at Island Acres provide a comfortable and lovely setting for swimming, fishing, picnicking, camping and hiking.

The Corn Lake section is popular for fishing, hiking, picnicking and as a launch site for boaters and rafters into the Colorado River. A three-mile park trail connects Corn Lake to the 29 Road. In between is Colorado River Wildlife Area that features hiking, fishing, wildlife observation and acts as an outdoor classroom for local school children.

The Fruita section opened in May of 2000. The Park features a Visitor Center, camping, picnicking, fishing, swimming and a launch site for boaters and rafters into the Colorado River.

The Connected Lakes section offers fishing, picnicking, bird watching and hiking on the many different trails. This section also offers a boat and raft launch area to the Colorado River.

PICNICKING

Picnicking is a popular activity at every section of the park. Tables and charcoal grills are provided at all sections except Colorado River Wildlife Area. Located along the park lakes, trails and river, sites may vary from open, shaded, covered or fully accessible. The sites are available year-round on a first-come, first-served basis.

Two group picnic sites are available at the Island Acres section and one group picnic site is available at the Fruita section. Perfect locations for weddings, reunions, company picnics and other celebrations, these sites provide private accommodations for large groups such as shade, shelter, potable water, electricity, horseshoe pits and volleyball courts. There is close access to swimming, fishing and hiking trails. Reservations for Group Picnic Areas can be made beginning January 2 of the desired year by calling 970-858-9188 or 970-464-0548.

CAMPING

Island Acres and Fruita are the two sections of the park that offer camping. At Island Acres, there are 80 sites available, 40 with full hook-ups. At Fruita, there are 57 sites available, 22 with full hook-ups and 22 with electrical hook-ups. Coin-operated showers and laundry, and flushable toilets are provided. At Island Acres, shade is available in many sites and a canyon breeze is almost

always guaranteed. At Fruita, shade shelters are available at most of the campsites, and refreshing breezes are common. A group camping area can be reserved at Fruita by calling 970-858-9188.

Firewood is available, ask any park ranger or camp host for details. Dump stations are available at both campgrounds for use by all campers with a valid camping permit.



While enjoying the park's amenities during your stay, remember that the Grand Valley area is rich with many recreational and cultural opportunities. The spectacular Grand Mesa, the wineries of Palisade, the Colorado National Monument, dinosaur attractions, excellent mountain biking and hiking trails and much more are just minutes away from Island Acres and Fruita. Ask for information at the park office.

In addition to a daily permit, a valid camping permit is required for each night's stay and must be displayed on the campsite marker provided at the site. Camping is permitted in designated sites only.

Campsites can be reserved at least three days in advance of arrival, and for up to 14 nights, online at www.parks.state.co.us and also by calling 1-800-678-CAMP (2267) outside the Denver metro area or 303-470-1144 within the Denver area.

FIRST AID

First aid can be obtained from any park ranger or at the entry station and park office when they are open, or dial 911.

COMMUNITY FACILITIES

Gas/service stations, grocery stores, restaurants and religious facilities are available in Palisade, Grand Junction, Fruita and the surrounding communities. There are three hospitals in Grand Junction and one hospital in Fruita.

ACCESSIBLE FACILITIES

The Corn Lake and Connected Lakes sections provide accessible picnic areas, parking areas and restrooms. The Island Acres and Fruita sections provide accessible parking areas, restrooms and campsites. Corn Lake provides two wheelchair accessible fishing piers. Connected Lakes has five wheelchair accessible fishing sites.

PARK HEADQUARTERS

The park office is located at Corn Lake, also the site of the Rocky Mountain Region Office. This shared office has information about James M. Robb - Colorado River State Park as well as brochures for all other state parks. Registrations for boats, OHV and snowmobiles can be obtained at the Corn Lake and Fruita sections. A Visitor Center and book store is located at the Fruita section.

REGULATIONS

James M. Robb - Colorado River State Park was built and is maintained for your use and enjoyment. To ensure the safety and enjoyment of all park visitors, please observe the following regulations:

1. Keep all pets under control and on a leash no more than six feet long.
2. Operate motorized vehicles on designated roads and parking lots only.
3. Place all trash and litter in the receptacles provided.
4. Build fires only in the fire rings and grills provided.
5. Glass containers and pets are not allowed on swim beaches.
6. Report any problems to a park ranger.

TRAILS

A three-mile stretch of the Colorado River Trail travels west from Corn Lake through Colorado River Wildlife Area and on to 29 Road. This section is open to all users except motorized vehicles.



Each of the park sections offers hiking and biking. The Fruita section has a wide .25-mile gravel trail with scenic bench stops between the lake and the Colorado River. The Island Acres section has a .75 mile, self-guided, hard-packed trail following the course of the Colorado River. Hikers view the park while taking a pleasant stroll through the area's geological history. Connected Lakes has nearly four miles of trails, some paved and some hard packed. A connecting trail runs between the lakes along the Redlands Canal and the Colorado River.



WATER SPORTS

Hand-propelled crafts and boats with electric trolling motors are allowed on all waters except Swimmin' Hole at Island Acres, the Wildlife Area and the Pear Park section. Boats with gas motors are not permitted on any lake in the park. Trailer launching is not allowed at any of the lake access points.

Swimming is permitted at Island Acres and Fruita. Swim at your own risk as lifeguards are not provided.

Boat access to the Colorado River is available at Corn Lake, Connected Lakes and Fruita. Rafting, tubing and canoeing are

popular river activities to cool you off on a hot day. Several river outfitters located in the area provide guided rafting trips, lessons and equipment rentals.

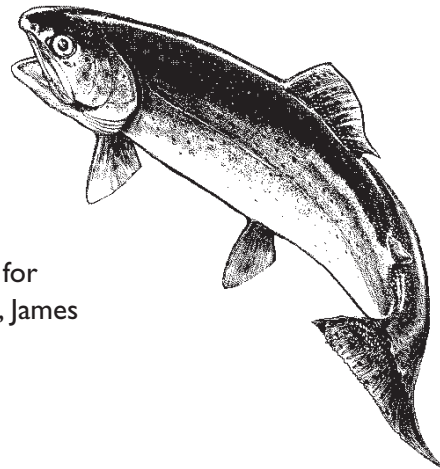


WILDLIFE

The best time for viewing wildlife is in the early morning and early evening. Waterfowl, shorebirds, birds of prey, including osprey, bald and golden eagles, many different songbirds and other game birds such as dove and quail may be found at any section of the park. The careful observer may see mule deer, skunk, cottontail rabbits and beaver, all of which are common to the park and the surrounding area. Hunting is NOT permitted in any of the park areas.

FISHING

James M. Robb - Colorado River State Park offers a variety of fishing opportunities year round. Whether you desire to fish quiet ponds or river waters for warm or cold water species, James M. Robb - Colorado River State Park has it all.



The Colorado River has a variety of species. Most popular are the large brown trout and channel catfish that are frequently pulled from its waters. Remember that several endangered fish species inhabit the river and must be immediately released unharmed if caught.

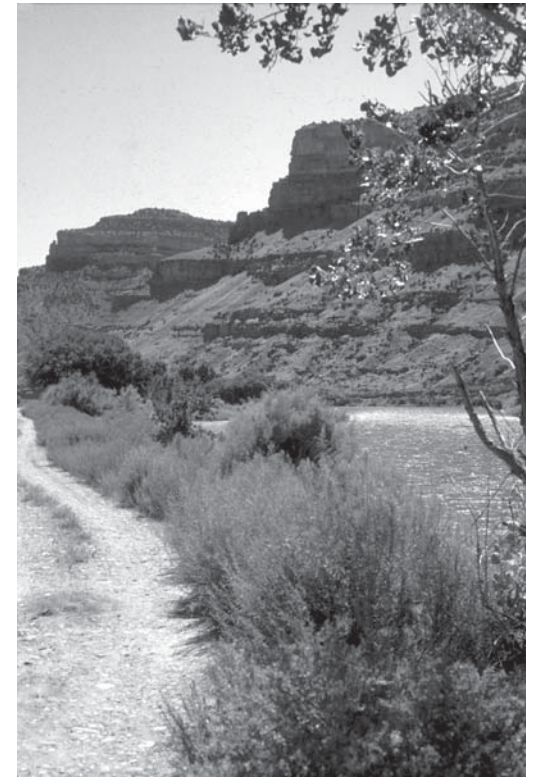
The Colorado Division of Wildlife stocks Old Orchard and Roans Pothole at Island Acres, Corn Lake and Fruita with catchable size rainbow trout. Fruita is also stocked with cutthroat trout, bluegill and largemouth bass.

Bullhead Flats at Island Acres has a self-sustaining population of bullhead catfish and green sunfish.

Corn Lake, Colorado River Wildlife Area, Duke Lake, Endangered Fish Lake and Connected Lakes all have self-sustaining populations of largemouth bass, crappie, bluegill and channel catfish.

WINTER RECREATION

During the winter the park is open for ice skating and ice fishing when conditions permit. Trails are kept maintained and open for hiking, walking and biking.

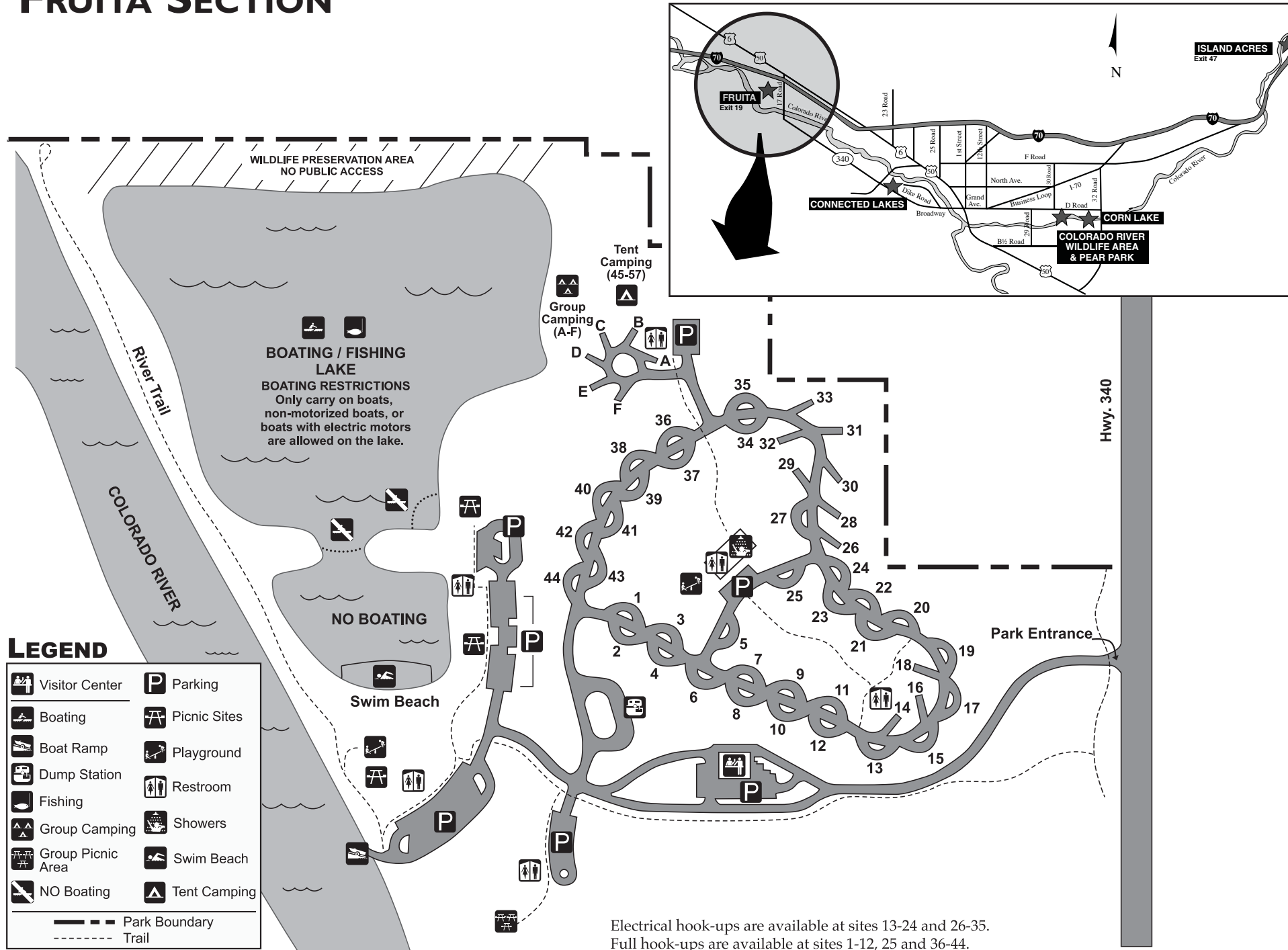


JAMES M. ROBB - COLORADO RIVER STATE PARK

FRUITA SECTION

FRUITA

The Fruita section is open year-round for camping and day-use activities. The day-use area closes at 10:00 p.m. The Fruita sections is located south of Exit 19 on Interstate 70 on State Highway 340, adjacent to the Colorado River. The Fruita section is enjoyed by Grand Valley residents and is the first State Park travelers can visit coming from the west into Colorado on Interstate 70. With magnificent views of both the Colorado National Monument and the Book Cliffs area, the Fruita section provides exceptional camping facilities, lake fishing, swimming and boating, lovely picnic sites, seasonal birding, a walkway along the Colorado River, and a large Visitor Center. Nearby are renowned mountain biking trails, dinosaur sites and red rock hiking.



Electrical hook-ups are available at sites 13-24 and 26-35.
Full hook-ups are available at sites 1-12, 25 and 36-44.

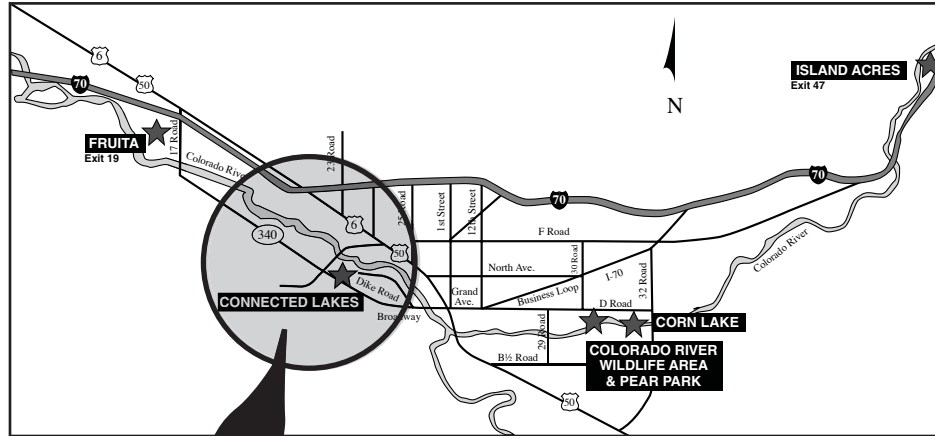
To make camping reservations, call
(303) 470-1144 in the Denver metro area
or 1-800-678-CAMP (2267)
outside the Denver metro area
or online at www.parks.state.co.us.

JAMES M. ROBB - COLORADO RIVER STATE PARK

CONNECTED LAKES SECTION

LEGEND

	Accessible Fishing		Restrooms
	Boat Ramp		Trailhead
	Parking		Paved Trail
	Park Office		Unpaved Trail
	Picnic Area		

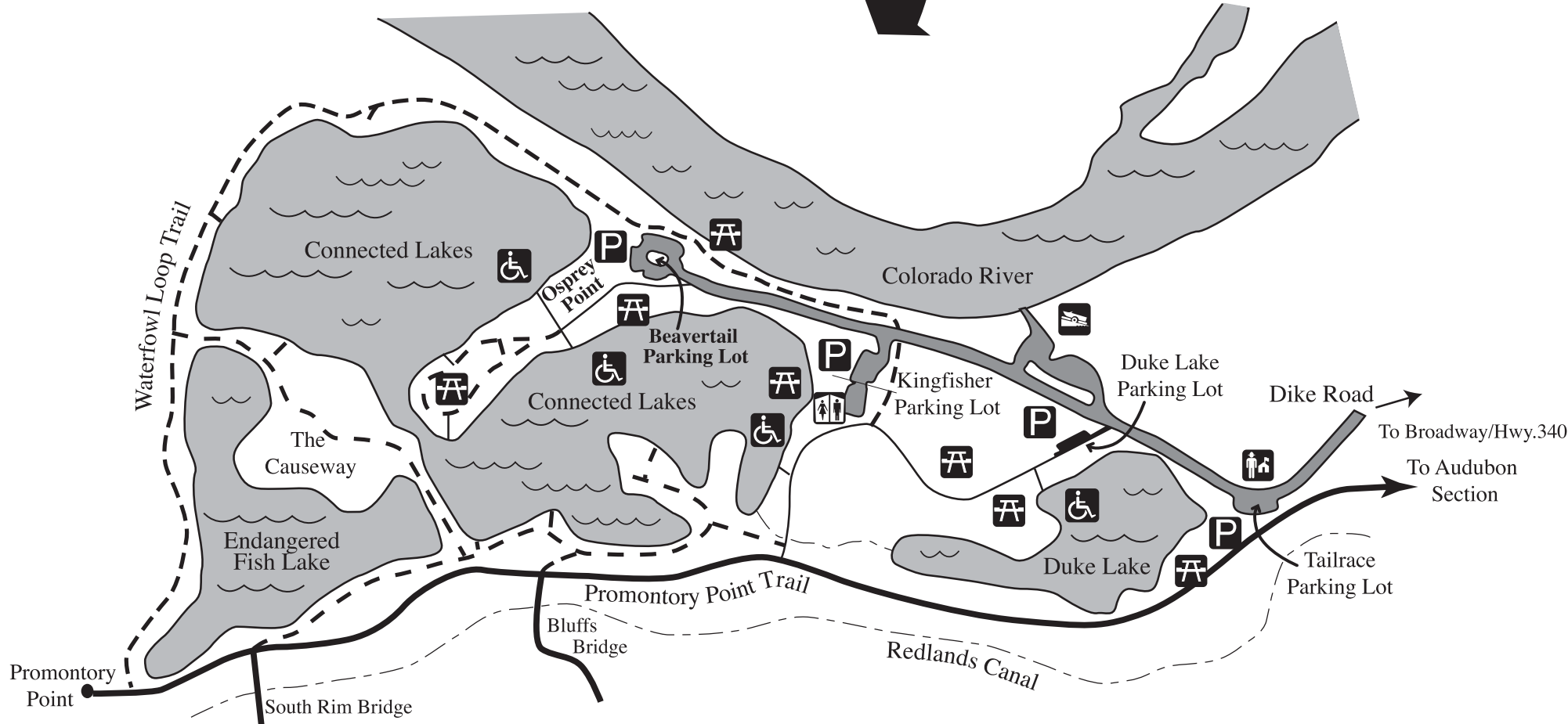


CONNECTED LAKES

The Connected Lakes section is a day-use park with hours posted at the entrance. The park can be accessed by travelling north and west on Power Road off State Highway 340. Connected Lakes provides a network of trails that traverse a series of reclaimed gravel pits. Visitors find a wide variety of recreational opportunities, including fishing, picnicking, hiking and bird watching.

Amenities include:

- river launch site for boaters and rafters
- several disabled fishing piers/structure/access
- picnic shelters
- warm water fishing only
- boating (non-electric motors only in ponds)



CONNECTED LAKES TRAIL MILEAGE	
From	Mileage
Tailrace lot to Promontory Point (one way)	1.00
Duke Lake lot along Waterfowl Loop Trail to Promontory Point Trail and back	1.75
Duke Lake lot to Kingfisher lot on sidewalk (one way)	.21
Kingfisher lot to Waterfowl Loop Trail, around Endangered Fish Lake on Promontory Point Trail and back	1.46
Kingfisher lot to Waterfowl Loop Trail, across The Causeway to Promontory Point Trail and back	1.06
Beavertail lot to Osprey Point and back	.28

JAMES M. ROBB - COLORADO RIVER STATE PARK

COLORADO RIVER WILDLIFE AREA SECTION & PEAR PARK TRAIL

COLORADO RIVER PEAR PARK

An area of southeast Grand Junction has been known as Pear Park since the 1880s. Early settlers in the Grand Valley planted and established orchards along the Colorado River near D Road and 27 1/2 Road. In the 1890s land was offered for sale in the vicinity of 30 and D Roads and the lands were specifically marketed for their orchard potential.

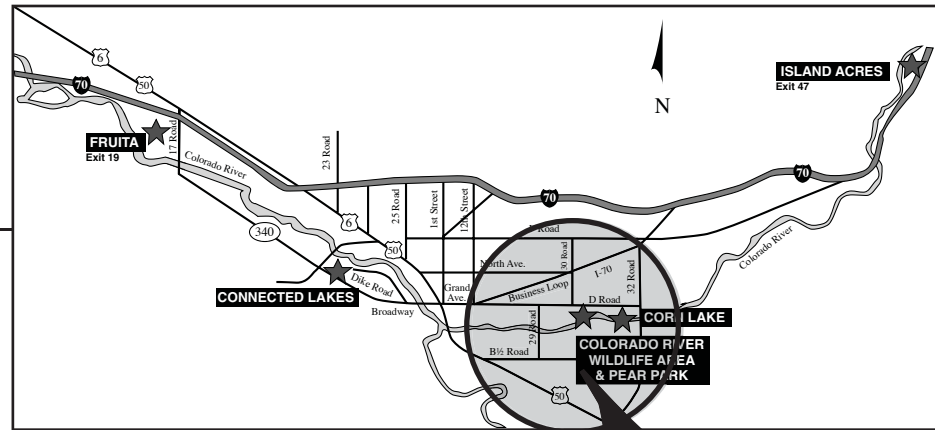
In 2005 a new mile of paved, multi-use trail was opened to the public between 29 Road and 30 Road. This created access of more than three total miles, stretching west from Corn Lake at 32 Road.

The numerous small lakes in the Pear Park Trail section provide critical habitat for endangered fish. Opportunities for hiking and wildlife observation abound. Boats, rafts and

other floating devices are prohibited. Fishing is also prohibited to protect the endangered fish.

These lakes were created with gravel extraction. Vegetative management is ongoing on the shoreline of most lakes. Public access is restricted indefinitely to allow for the growth of plants and grasses in this arid, desert climate.

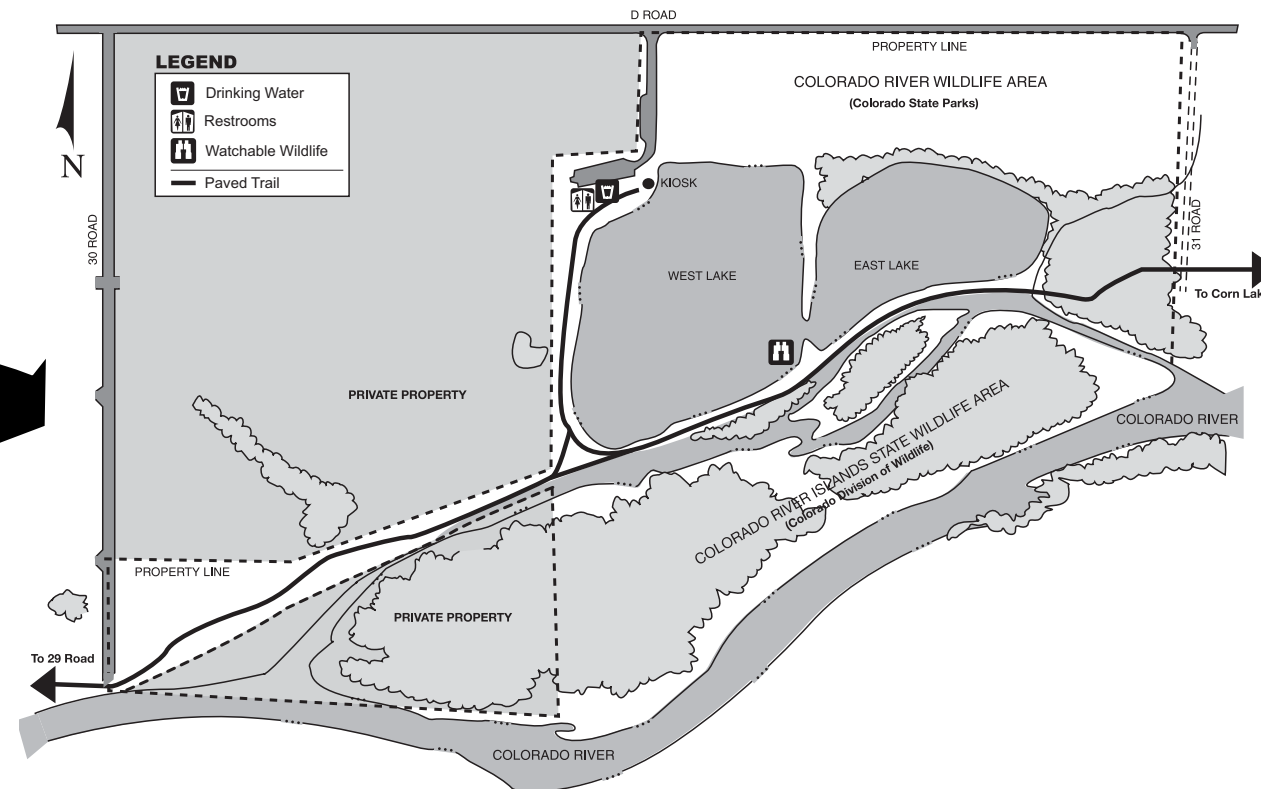
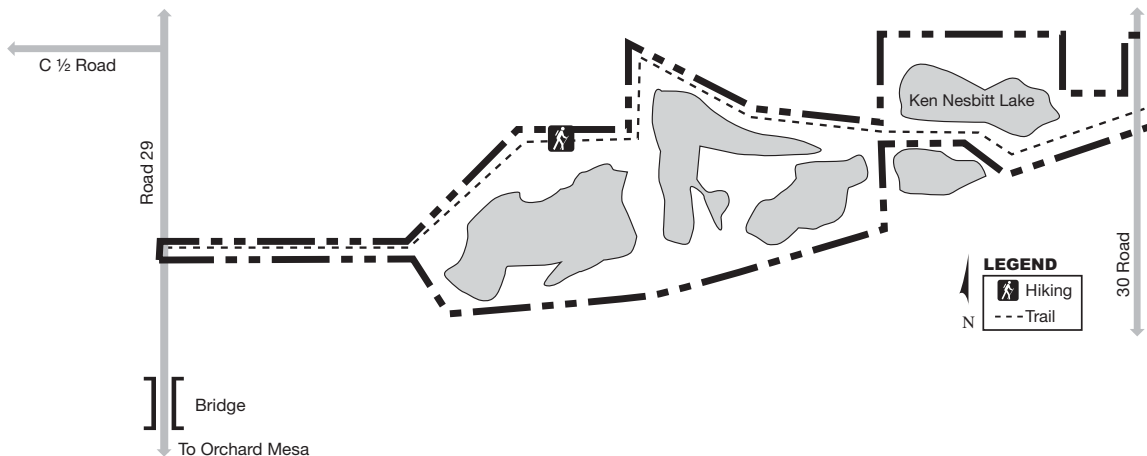
In 2006 Mesa County opened a new vehicle bridge over the Colorado River at 29 Road. This bridge has pedestrian access to the trail from Orchard Mesa. Trail users wishing to join existing trails in Grand Junction on the north side of the Colorado River should access C 1/2 Road and travel west from 29 Road.



COLORADO RIVER WILDLIFE AREA

Located one mile west of Corn Lake on D Road, the Colorado River Wildlife Area was jointly purchased by Colorado State Parks and the U.S. Bureau of Reclamation. This area was constructed to replace wetlands lost during the Grand Valley Salinity Control period. Since the primary management emphasis is on protection and enhancement of wildlife and wetlands habitat, recreation facilities have been kept to a minimum. Hiking, wildlife observation and environmental education activities are available here.

Boating is not available. Fishing access is on the south and west sides of the lake only.

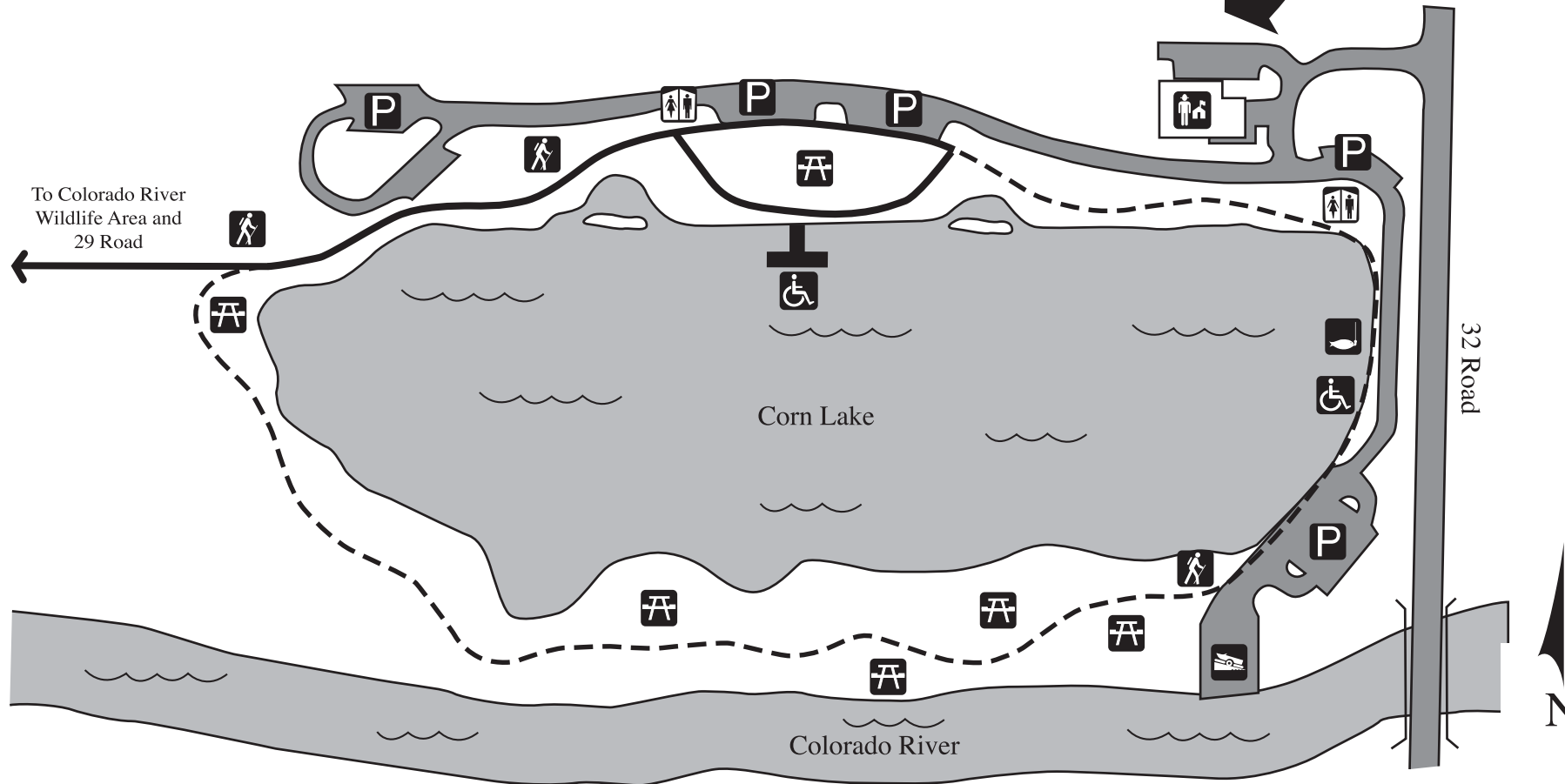
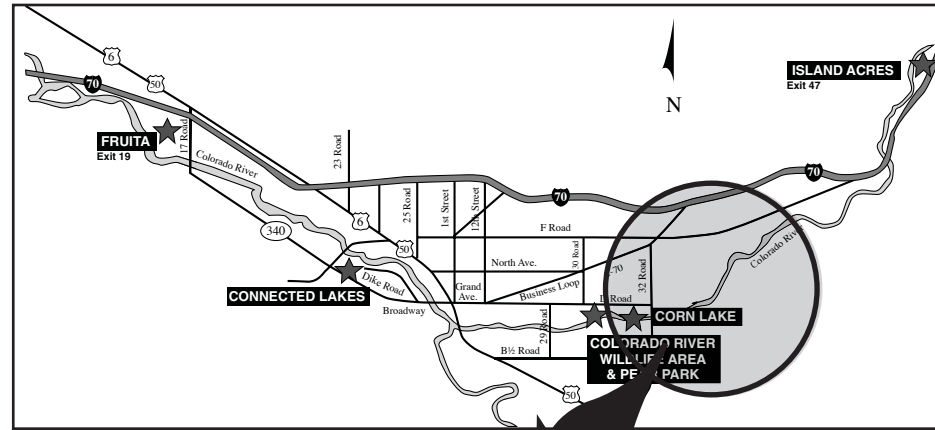


JAMES M. ROBB - COLORADO RIVER STATE PARK

CORN LAKE SECTION

LEGEND

	Accessible Fishing		Restrooms
	Boat Ramp		Trailhead
	Parking		Paved Trail
	Park Office		Unpaved Trail
	Picnic Area		



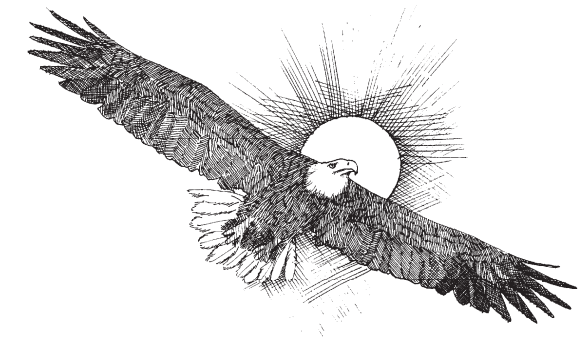
CORN LAKE

The Corn Lake section is a day-use only park. Corn Lake, located at 32 Road and the Colorado River, serves as headquarters for the park and the Colorado State Parks Rocky Mountain Region office.

Corn Lake was acquired by Colorado State Parks as the first in a series of planned acquisitions that will link parks and trails from Island Acres to the Loma boat launch. Corn Lake provides a launching site for boaters and rafters to the Colorado River. A .9-mile hardpacked trail follows the lakeshore. The trail provides access to both the Colorado River and Corn Lake for fishing and is used by hikers and bicyclists. The park also offers picnic sites and restrooms for physically challenged visitors.

Hours are posted at the park entrance. Corn Lake offers both warm and cold water fishing and picnic shelters. The park is stocked with trout each spring and fall.

Beginning in 2006 Corn Lake opened for hand-propelled and small electric motor powered boats.



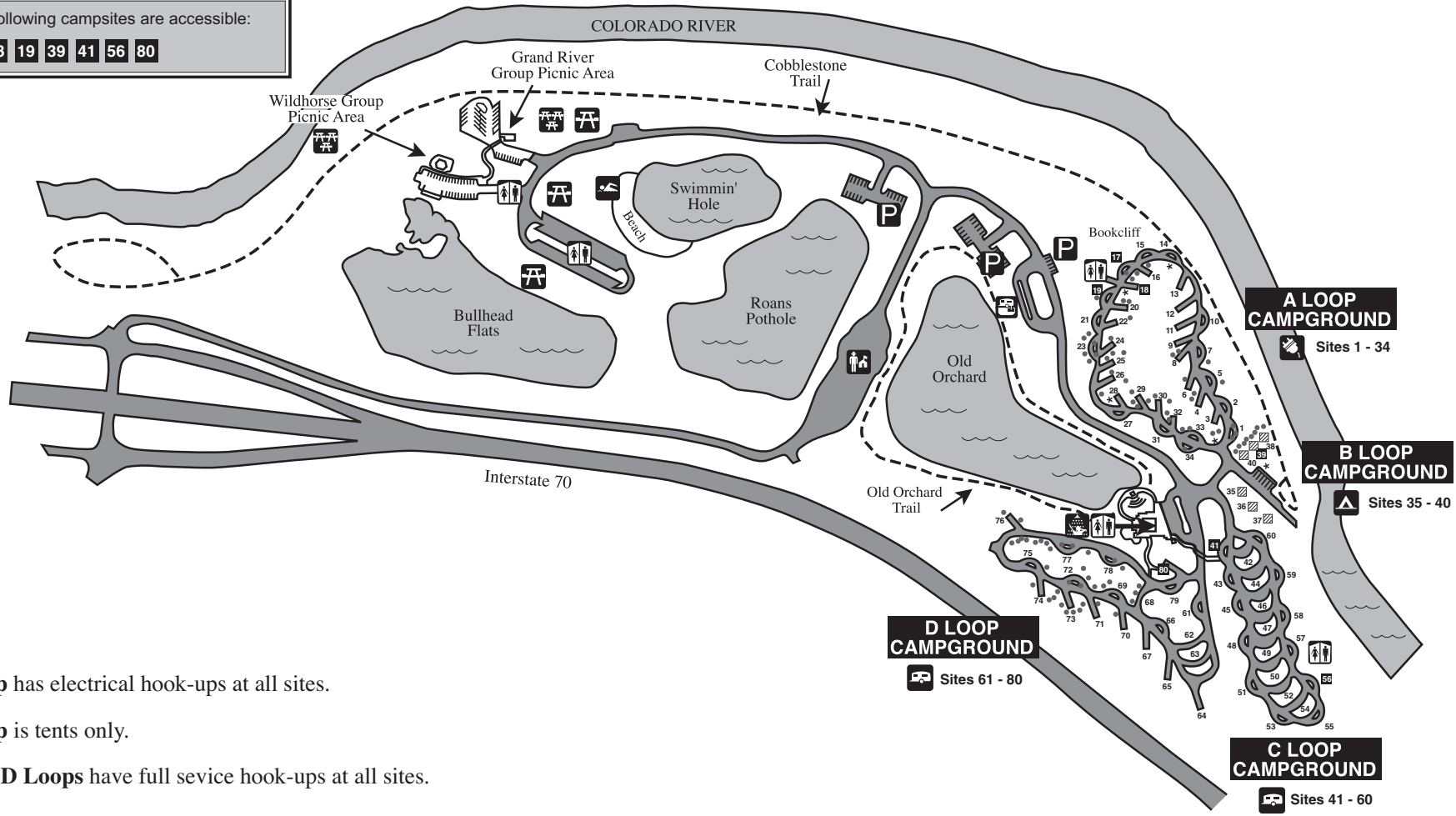
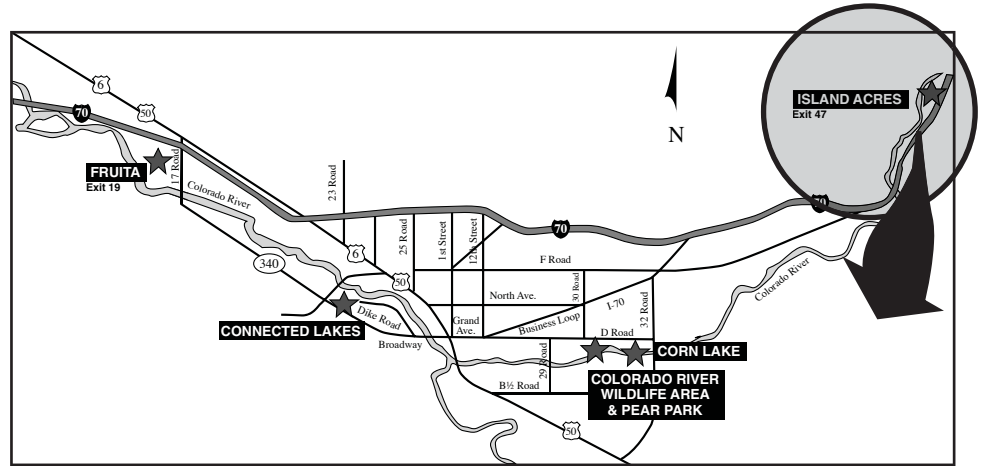
JAMES M. ROBB - COLORADO RIVER STATE PARK

ISLAND ACRES SECTION

LEGEND

	Dump Station		Restrooms
	Electric Hookup		Showers
	Full Utility Hookups		Swim Beach
	Group Picnic Area		Tent Camping
	Parking		Tent Pads
	Park Office		Trees
	Picnic Area		Water
	Unpaved Trail		

The following campsites are accessible:
17 18 19 39 41 56 80



A Loop has electrical hook-ups at all sites.

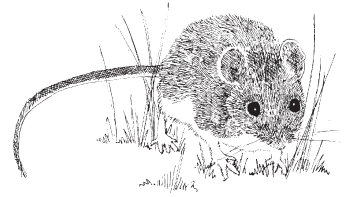
B Loop is tents only.

C and D Loops have full service hook-ups at all sites.

ISLAND ACRES

The Island Acres section is open year-round for camping and day-use activities. The day-use area closes at 10:00 p.m. Island Acres is located at Exit 47 on Interstate 70 in the scenic Debeque Canyon. The park is enjoyed by Grand Valley residents and out-of-state visitors as a convenient and attractive place to fish, camp, picnic and/or hike along the Colorado River or near any of the lakes in the park.

As the Colorado River and other erosional forces shaped the canyon, a large island was left in the middle of the river. The history of the canyon and its island reflects the history and constantly changing face of the West. A man made dike built in the 1950s eliminated the true island characteristics of the area, but not its usefulness as a public recreation site. State Parks has managed the area since 1968.



To make camping reservations, call
 (303) 470-1144 in the Denver metro area
 or 1-800-678-CAMP (2267)
 outside the Denver metro area
 or online at www.parks.state.co.us.