



# James M. Robb - colorado river state park

FY 06-07 PARK FACTS

## about the park

James M. Robb - Colorado River State Park consists of five sections of beautiful riverfront along the Colorado River as it flows through the Grand Junction area. From Island Acres in the east, through Corn Lake, the Colorado River Wildlife Area, Connected Lakes and down the river to Fruita, this remarkable park is unique to the State Parks system. The park's trail system winds through stands of tall trees and along the banks of this famous and magnificent western river. Visitors stop along the way to enjoy fishing and picnics in delightful settings. Island Acres and Fruita offer swimming, showers and tent camping as well as full-service campsites. The other three areas offer day-use activities including trails and boating for hand-propelled or electric-powered craft. Group picnic facilities are available and may be reserved by contacting the park.

**total visitation, FY 06-07**  
(July 1, 2006 to June 30, 2007)  
462,436

**county**  
Mesa

**congressional district**  
3

**state legislative districts**  
Senate 7  
House 54 and 55

**year became a state park**  
1994

**ownership**  
84% State Parks  
16% other

**land acres**  
639 acres

**water acres**  
251 acres



## park inventory

**miles of road**  
paved 4.1  
unpaved 1.1

**miles of trails**  
hiking 9.8  
biking 7.8  
horseback 3.4

**number of boat ramps to the river**  
3

**number of campsites**  
137

**number of cabins/yrts**  
0

**number of picnic sites**  
105

**concessions at the park**  
none

**major buildings/structures**  
two visitor centers  
two camper services buildings  
two group picnic areas  
two maintenance shop buildings  
park office  
five flush bathrooms  
eight vault toilets



## top attractions

- The Grand Valley is a major tourist destination, and Fruita, Grand Junction and Palisade are gateway communities to many natural attractions.
- The Colorado National Monument, McInnis Canyons National Conservation Area, the Grand Mesa and the national forests, Dinosaur Diamond, Scenic Byway/Highway 65, 18 wineries with vineyards, 150 miles of Kokopelli Trail, and the floatability of the Colorado River are all magnets for visitors.
- The two campgrounds serve as home base for those tourists coming to the area and enjoying the surrounding communities.



## contact information

James M. Robb - Colorado River State Park • Park Manager: Brad Taylor • 361-32 Road/PO Box 700 • Clifton, CO • 81520 • 970-434-3388 • colorado.river.park@state.co.us • www.parks.state.co.us •

# challenges

- This park fulfills a role traditionally held by a county park system, and as such, acquiring land, building multi-use trails and maintaining facilities spread over 35 miles are growing issues.
- The Grand Junction area is the largest city on Colorado's western slope. The influx of new residents requires better outdoor recreation opportunities.
- Keeping the vegetation green in the high desert is a challenge. High salt content in some irrigation canals complicates the growing season. Low river levels complicates getting water to the vegetation.

## budget and operations

### number of full-time employees

7.0

### number of seasonal employees\*

30.0

*\*seasonal employees are hired for periods up to six months in length*

### number of volunteers\*

424

### total volunteer hours contributed\*

5,770

*\*volunteer and volunteer hours figures are from calendar year 2006*

### total operating budget

\$762,579

### capital construction budget

\$61,264

### total revenue generated

\$797,129

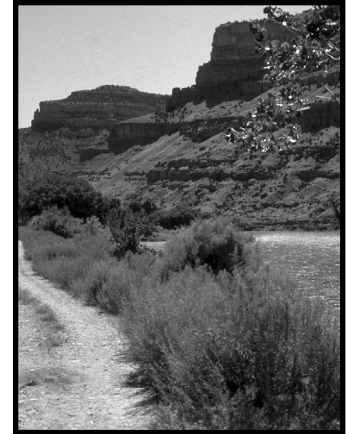
## land acquisitions FY 06-07

none

## ratios

### full-time staff to annual visitors

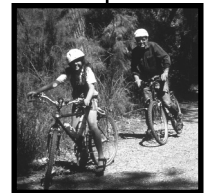
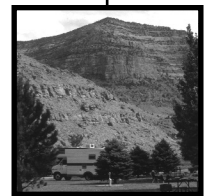
1:66,062



## partners

Grand Junction Visitor and Convention Bureau  
Colorado Riverfront Foundation  
Mesa Valley School District 51  
Colorado Division of Wildlife  
Bureau of Land Management  
Mesa State College  
Grand Valley Audubon Society  
Mesa County  
City of Fruita  
City of Grand Junction  
Town of Palisade

U.S. Fish and Wildlife Service  
Bureau of Reclamation  
Mesa Land Trust  
Colorado River Endangered Fishes  
Recovery Program  
Western Colorado Botanical Society  
Museum of Western Colorado  
Fruita Tourism Council  
Colorado West Tourism Council  
Grand Circle Association  
U.S. Forest Service  
National Park Service



## volunteer activity

- We continue to sponsor a campground host program, bringing 24 people onto the park. Beginning in March and ending in mid-November, these volunteers stay an average of 60 days at the two campgrounds.
- The Bookcliff Middle School volunteer conservation program was created in 1987 and gives school kids the chance to get their hands dirty while learning outdoor ethics and science in a natural classroom.

## vision statement for Colorado State Parks

*Colorado State Parks offer exceptional settings for renewal of the human spirit. Residents and visitors enjoy healthy, fun-filled interaction with the natural world, creating rich traditions with family and friends that promote stewardship of our natural resources. Park employees and their partners work together to provide ongoing and outstanding customer service through recreational programs, amenities and services.*