



# harvey gap state park

FY 07-08 PARK FACTS

## about the park

Harvey Gap State Park, five miles east of Rifle Gap Reservoir, is a favorite spot with anglers. This lake is extremely popular for fishing, swimming and picnicking. The diverse fishery along with a 20 h.p. restriction make it a favorite for anglers wanting a peaceful day fishing. Ample shade and clear water make it equally popular for swimming and picnicking. Camping is not allowed at Harvey Gap, but is permitted at nearby Rifle Gap and Rifle Falls State Parks. In the winter, enthusiasts can snowmobile, cross-country ski and ice fish. Visitors can see wildlife in the area, including migrating waterfowl. This day-use area sits at an elevation of 6,400 feet. The park is a beautiful cedar and sagebrush habitat, with a grand hogback — a mountain ridge that runs along the backside of the park.

**total visitation, FY 07-08**  
(July 1, 2007 to June 30, 2008)  
25,663

**county**  
Garfield

**congressional district**  
3

**state legislative districts**  
Senate 8  
House 57

**year became a state park**  
1987

**ownership**  
0% State Parks  
100% other

**land acres**  
33 acres

**water acres**  
287 acres

**elevation**  
6,400'

## park inventory

**miles of road**

paved 0.0  
unpaved 0.3

**miles of trails**  
0.0

**number of boat ramps**  
1

**number of campsites**  
0

**number of cabins/yrts**  
0

**number of picnic sites**  
30

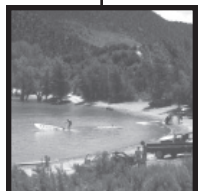
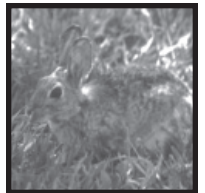
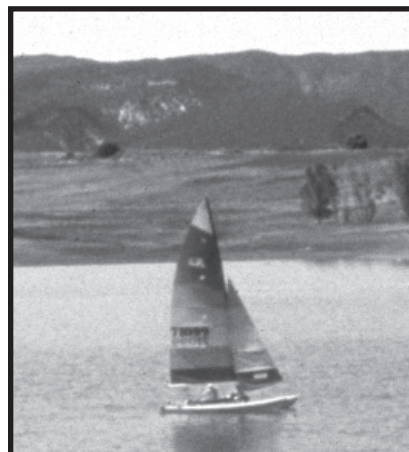
**concessions at the park**  
none

**major buildings/structures**  
none



## top attractions

- The swim beach is the primary draw during the summer season.
- The horsepower restriction (20 horsepower) makes this park a great location for smaller boats.
- Ice fishing and ice skating are very popular during the winter. Visitors and park staff work together to maintain an ice skating rink.



## contact information

Harvey Gap State Park • Park Manager: Aaron Fero • c/o Rifle Gap State Park • 5775 Highway 325 • Rifle, CO • 81650 • 970-625-1607 • rifle.gap.park@state.co.us • www.parks.state.co.us •

# challenges

- Harvey Gap State Park experienced significant water draw down due to agricultural needs below the reservoir. As the water held in the reservoir drops throughout the season, visitation also declines due to difficulties in the accessibility of the shoreline and boat ramps. Maintaining a steady visitation as the summer progresses is always a challenge.
- Limited infrastructure at the park challenges management to maintain repeat visitors as well as attract new visitors to the park.
- The park has no camping available. Without a camping element associated with the park, management is challenged to market the park to attract visitors who are more interested in day activities.



# land acquisitions FY 07-08

none

# partners

local Boy Scout troop  
Rifle Correctional Center

# volunteer activity

- Volunteer crews assist with routine maintenance throughout the park, including trash pick-up and other activities.

# budget and operations\*

*\*Rifle Falls and Rifle Gap split 4 FTE and a combined operating budget of \$361,143; these FTE also support Harvey Gap, although that is not reflected in Harvey Gap's operating budget.*

## number of full-time employees\*

0.5

*\*The three-park complex of Rifle Falls, Rifle Gap and Harvey Gap share 4.0 full-time employees.*

## number of temporary employees\*

1.0

*\*temporary employees are hired for periods up to six months in length*

## number of volunteers\*

14

## total volunteer hours contributed\*

2,042

*\*volunteer and volunteer hours figures are from calendar year 2007  
These figures represent a combined total for Rifle Falls, Rifle Gap and Harvey Gap.*

## total operating expenses

\$17,155

## capital construction expenses

\$0

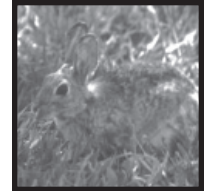
## total revenue generated

\$18,686

# ratios

## full-time staff to annual visitors

1:51,326



# vision statement for Colorado State Parks

Colorado State Parks offer exceptional settings for renewal of the human spirit. Residents and visitors enjoy healthy, fun-filled interaction with the natural world, creating rich traditions with family and friends that promote stewardship of our natural resources. Park employees and their partners work together to provide ongoing and outstanding customer service through recreational programs, amenities and services.